

Problem Statement

Coral reefs worldwide are heavily damaged by overfishing, pollution, and climate change. This project aims to fix that by creating artificial coral reef habitats.



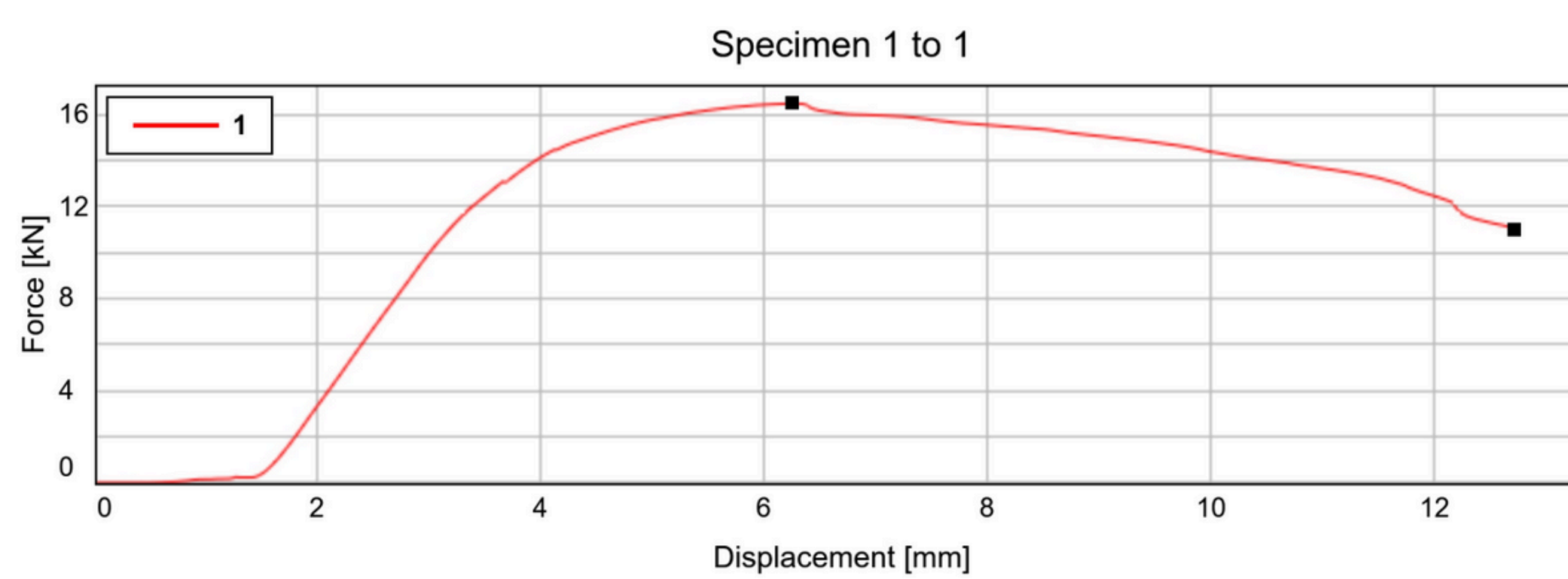
Material

- The structure was 3D printed using PLA filament
- PLA is biodegradable making it an environmentally friendly choice
- Research shows that PLA promotes coral growth
- PLA is affordable making the structure easy to replicate

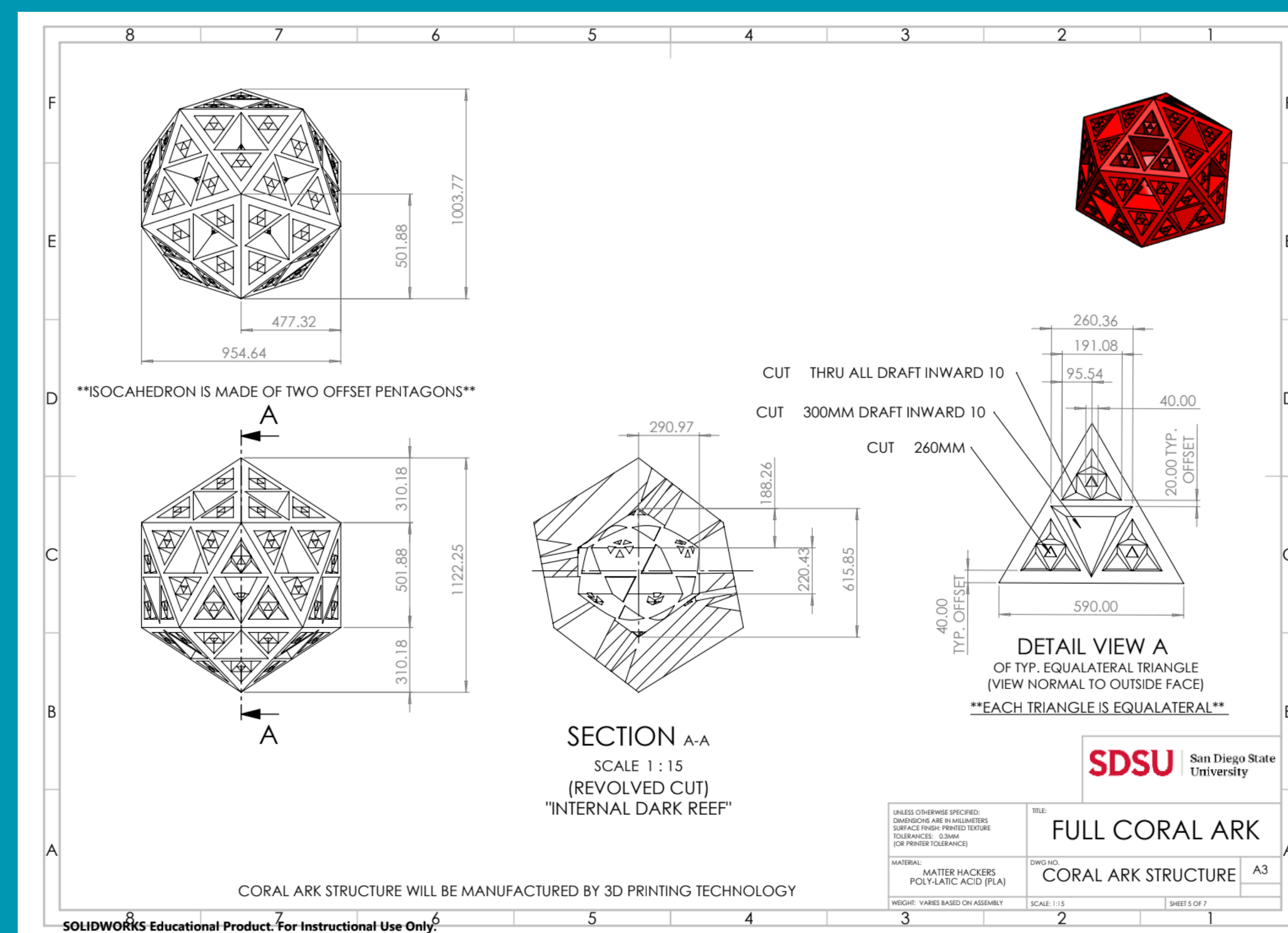
Testing

Compression tests on scale models showed the structure withstood over 3500 pounds of force before failing.

Results



Specimen	Maximum Force [kN]	Displacement at Maximum Force [mm]	Maximum Displacement [mm]
1	16.49	6.24	12.74



The Team

- Andre Abaya
- Jonathan Bautista
- Mason Cook
- Nicholas Entrup
- Clement Luu

Fall 2024